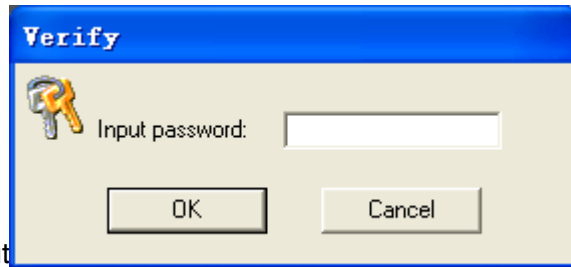
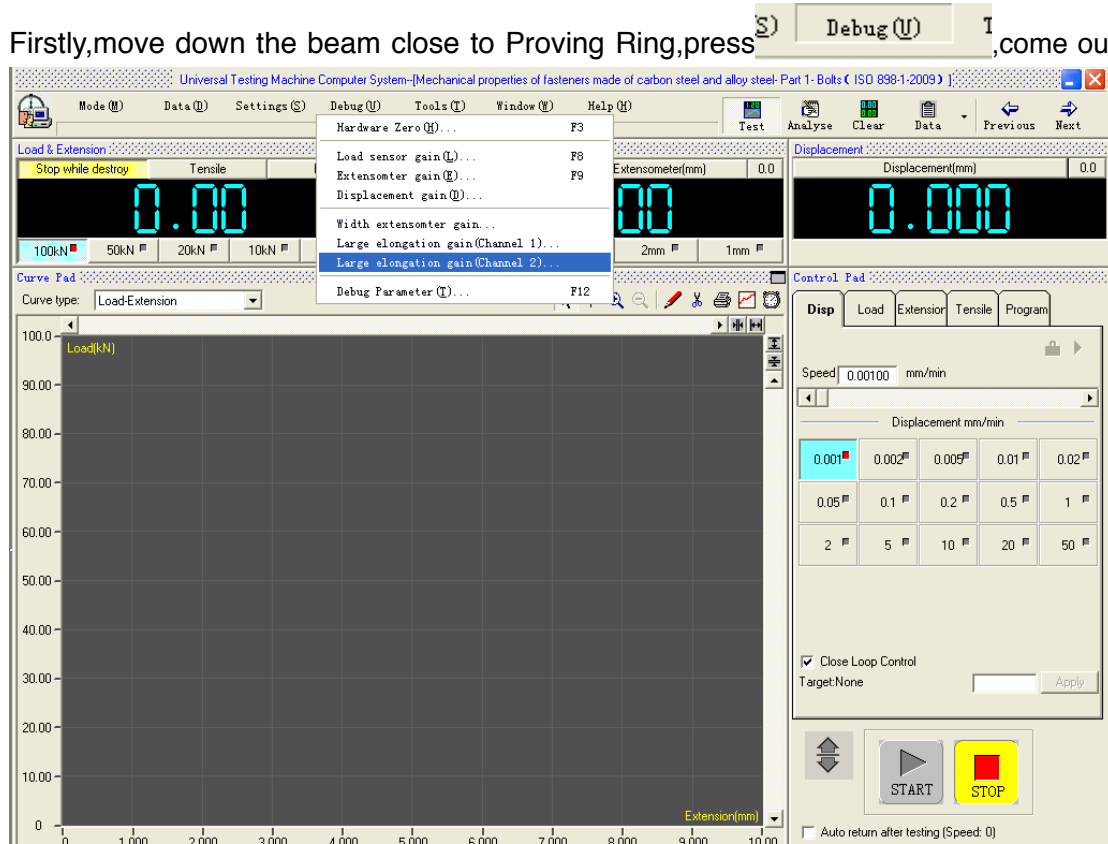


How to calibration:

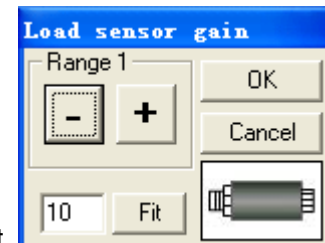
I. Load calibration: use Proving Ring.

Here is the steps:

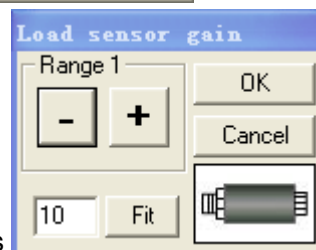
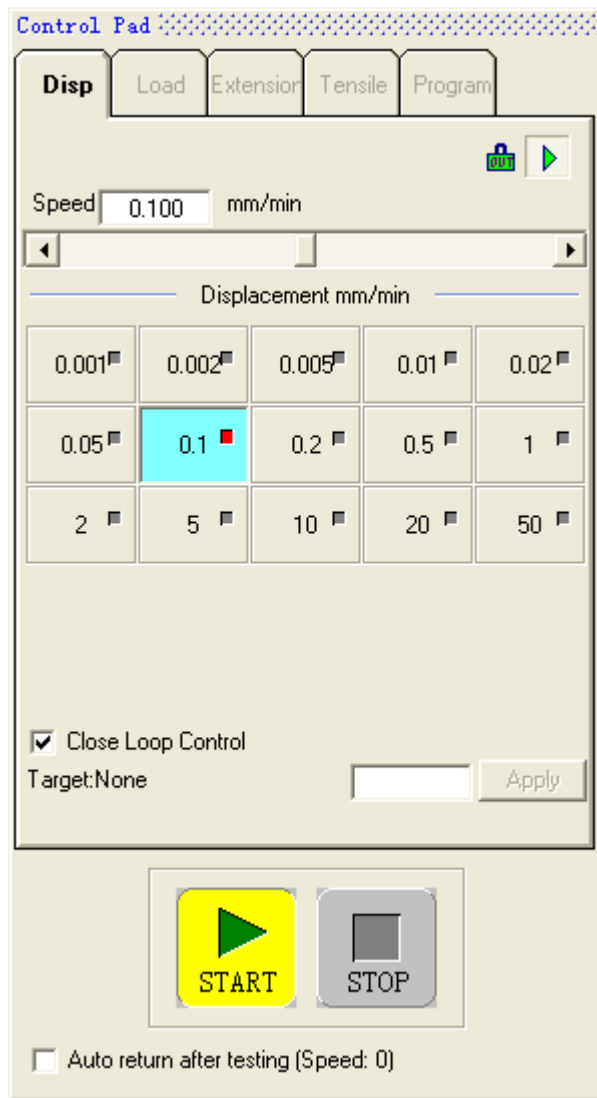
Firstly, move down the beam close to Proving Ring, press **Debug(U)**, come out



choose <Load sensor gain> come out



input password, the date, come out input the force that you need calibration, and choose 0.1 in the speed pad and press start, like this:



until it comes to target load press **Fit**, so it finished.

II. calibration of displacement is the same like load. and it needs dia indicator.